

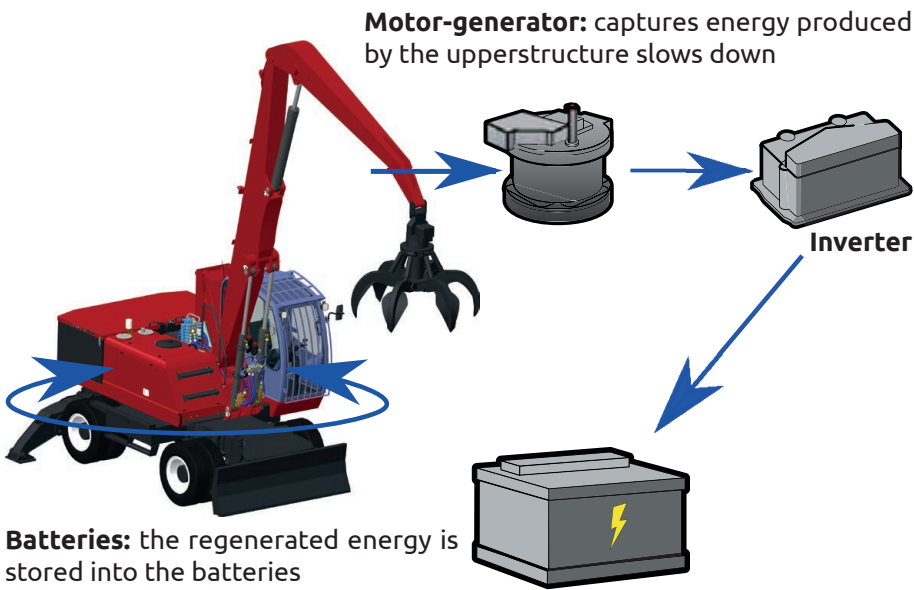
Solmec
SINCE 1960

EXP 5020ZE



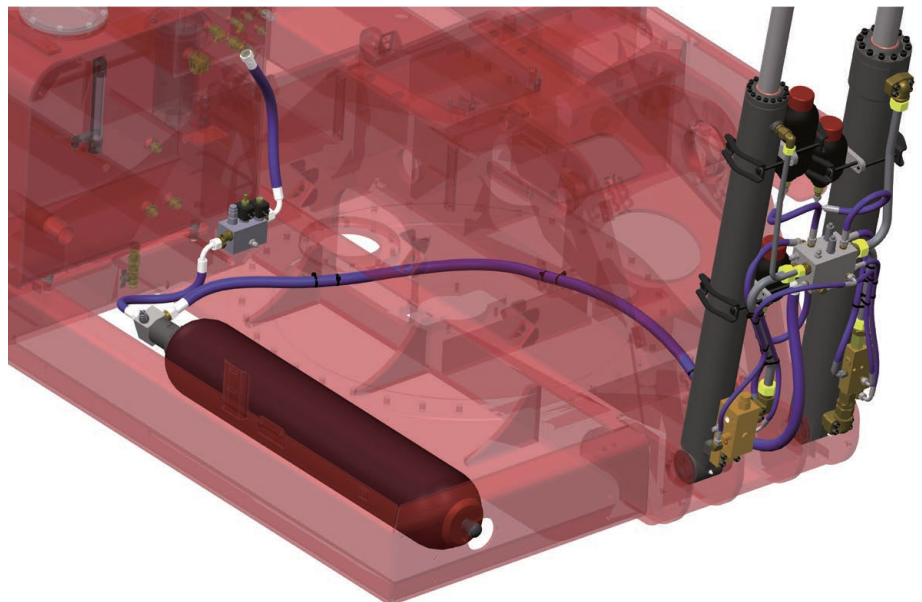
Energy saving (Kinetic Energy Recovery System)

The new EXP 5020ZE has been designed and built specifically for material handling with a particular focus on environment protection. ZE = ZERO EMISSION.



Load Energy Saving System (LESS)
 It's an hydro-pneumatic system of the machine passive weights support, it is constituted by a conventional hydraulic ram, connected directly to a series of hydro-pneumatic accumulator which guarantee a direct hydraulic force to the hydraulic ram. A multi-function solenoid valve unit, electronically managed, controls the correct functionality and the pre-charge pressure of the system. Through this system, the hydraulic power is used only for handling the load.

Thanks to the housings specially designed to receive the forks of a forklift, it is possible to lift the batteries to remove them from the machine.



Each of the 2 high-efficiency batteries is composed by 60 elements for a supply of 120 V at 930 Ah, for about 8 working hours.

High efficiency wall charger. Full charge in about 8 hours. Optional pedestal support can be provided.



Maintenance

The large bonnets can be easily opened to allow major maintenance operations to be carried out quickly and efficiently, while preserving operator safety.

The intervals of maintenance have been extended to reduce maintenance time, increase machine availability and reduce operating costs.

Slew ring, boom, stick, and rams are lubricated by a centralized automatic system with a 4 kg tank, while cab parallelogram elevating system doesn't require any lubrication due to special bushes.

The self-lubricating anti-friction bushes consist of a glass fibre load-bearing layer and a machinable sliding layer of fibre material with epoxy resin with PTFE.

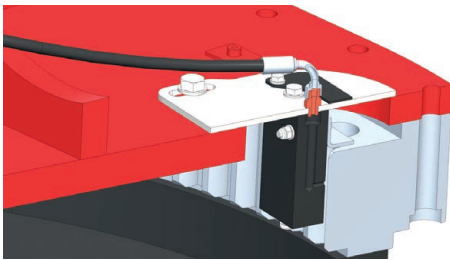


Eco-friendly choice: No lubricant

No daily maintenance: Reduced interventions and maintenance downtime for lubrication/greasing

Cost savings: No lubrication system. Less grease costs.

Use in heavy duty environments: no starting problems, corrosive environments, humid, cold climates



Automatic greasing of the slewing ring teeth.

Centralized automatic greasing system (as standard), to make easier service operations.



Safety

Solmec has always been committed to work safety. The "OWD" (Overload Warning Device), antirollover system, controls the load handled by the machine and stops the movements when it exceeds the maximum load allowed, authorizing only the movements that permit to be brought back the load to the safety position.

The operator presence system allows the use of machine controls only if the operator is seated in the driver's seat with the left armrest lowered.

Non-slip steps and side handrails make it easier for the operator to get on and off the machine.

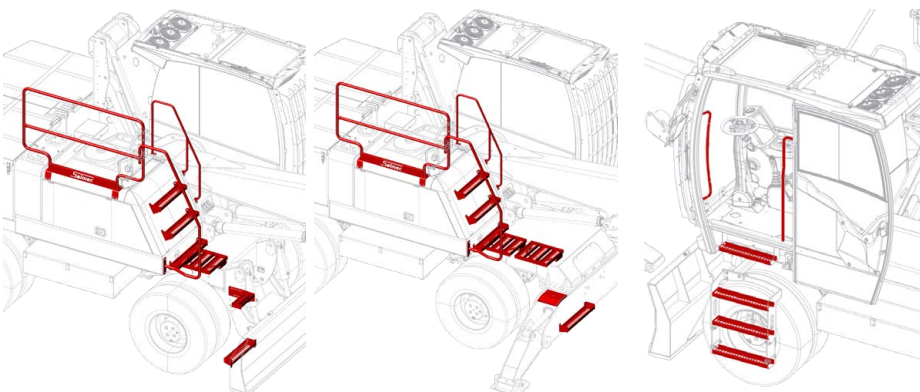
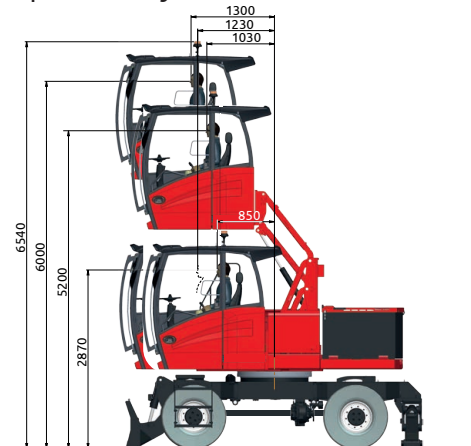
Double rear mirror with wide angle view.



As option: rear camera with 7" color display into the cabin. Possibility to fit a camera on the right side and/or under the cab (or kit 3 cameras).



Operators cabin with hydraulic parallelogram elevation has a operator's eye 5,2m high reach. It is possible, as option, to arrive to 6,0m. operator's eye



Wide steps standard included, for a safer and easier access on the machine and to the main maintenance and refuelling areas.

Performance

For over 60 years, Solmec produces material handling machines for scraps metal and waste recycling industry, for steel mills, for port and rail unloading, for sawmills, tanneries and car demantlers. The new spacious cabin, equipped with every comfort, guarantees a pleasant and efficient working environment. The large windows in addition to the elevation cab allow a perfect view of the working area and ensure to the operator a driving in perfect safety .



Complete dashboard with 7 "color screen and reminder of maintenance intervals.

The on-board computer also displays the «OWD» (Overload Warning Device) functions to keep the load being handled under control at all times.

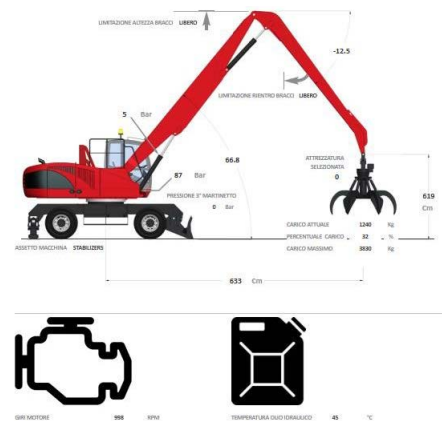
New electronic joysticks with proportional rollers for precise control of the bucket rotation, the front blade and the outriggers.

For better visibility, steering on joysticks is available as option.

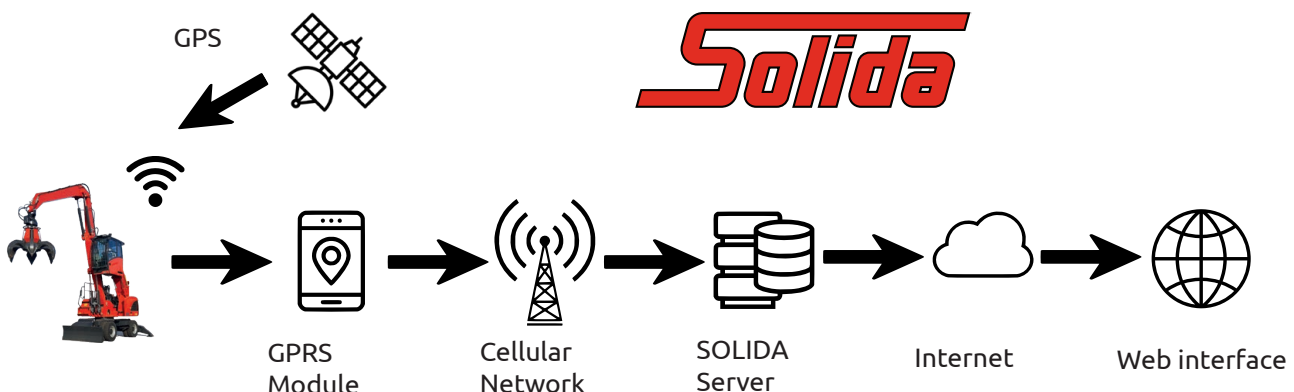
SOLIDA - Solmec Link Data

SOLIDA (Solmec Link Data) is a tool completely integrate on the material handler monitoring system and it permit to check:

- the position
- the working hours
- battery charge percentage
- downtime machine
- possible error messages
- etc...



these data are viewed trough the web interface.



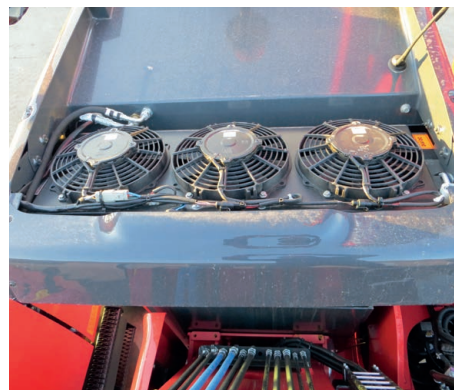
Comfort



Easy access button panel for headlights, windshield wipers and bluetooth® radio.



Automatic air conditioned as standard.



3 air conditioning fans separated from the main radiator for a more efficient cooling system.



Roll-up sun blind and wiper on the roof



Front-mounted roller sun blind.



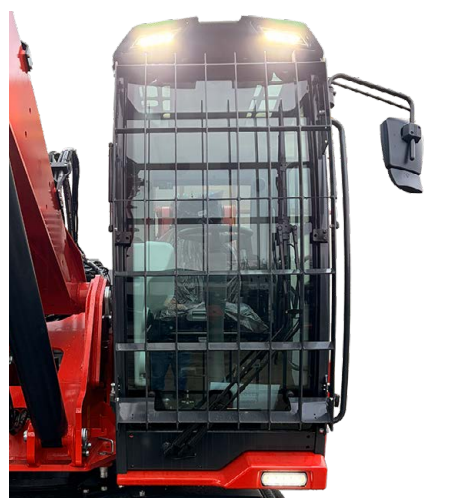
Driver's cab with large glass surfaces and left sliding side window.



Adjustable steering column ...

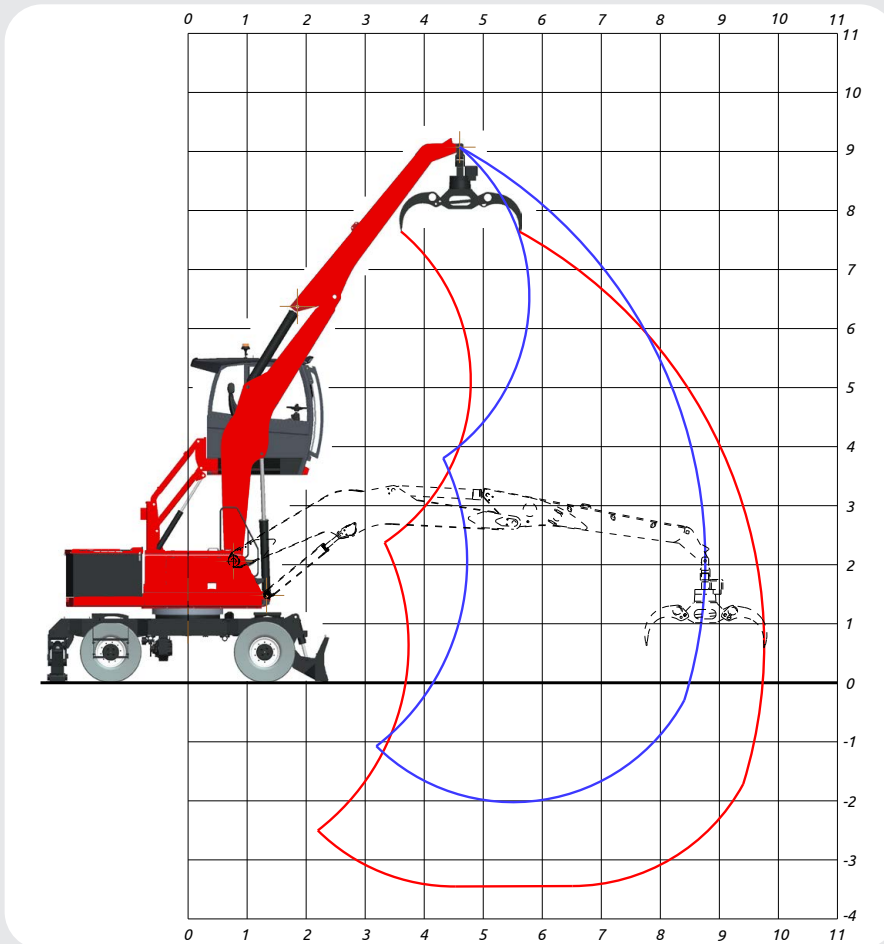


... for a comfortable driving position.



3 Standard LED headlights on cab.

WORKING DIAGRAM



AF8:
Gooseneck boom
4,80 m

Industrial stick
3,30 m

OPERATING WEIGHT:

25.400 kg

OPERATING WEIGHT WITH FRONT BLADE,
REAR OUTRIGGERS, SOLID RUBBER TYRES,
GOOSENECK BOOM 4,80 m,
INDUSTRIAL STICK 3,30 m,
RV 400 ORANGE PEEL GRAB WITH ROTATOR.

LIFTING CAPACITIES TONS "AF8"

LIFTING RANGE (m)

HEIGHT METERS	CONF.	5,5		7,0		8,5		8,8	
		○	⊙	○	⊙	○	⊙	○	⊙
6,0	○○			3,74*	3,62				
	┌┐			3,74*	3,74*				
	└└			3,74*	3,74*				
4,5	○○			3,84*	3,59				
	┌┐			3,84*	3,84*				
	└└			3,84*	3,84*				
3,0	○○	4,99*	4,86	4,11*	3,52	3,60*	2,71		
	┌┐	4,99*	4,99*	4,11*	4,11*	3,60*	3,60*		
	└└	4,99*	4,99*	4,11*	4,11*	3,60*	3,60*		
1,5	○○	5,64*	4,69	4,40*	3,44	3,63*	2,68	2,91*	2,56
	┌┐	5,64*	5,64*	4,40*	4,40*	3,63*	3,63*	2,91*	2,91*
	└└	5,64*	5,64*	4,40*	4,40*	3,63*	3,63*	2,91*	2,91*
0	○○	6,01*	4,58	4,53*	3,38	3,38*	2,66		
	┌┐	6,01*	6,01*	4,53*	4,53*	3,38*	3,38*		
	└└	6,01*	6,01*	4,53*	4,53*	3,38*	3,38*		
-1,5	○○	5,78*	4,53	4,23*	3,35				
	┌┐	5,78*	5,78*	4,23*	4,23*				
	└└	5,78*	5,78*	4,23*	4,23*				

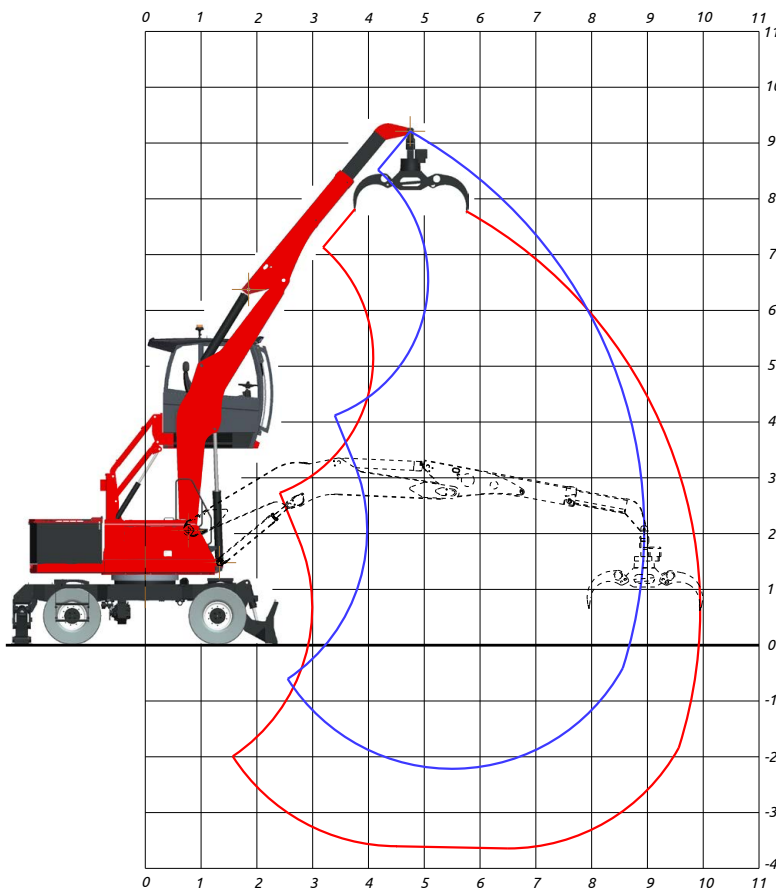
○ LIFTING CAPACITIES ON 360° WITHOUT SAFETY FACTOR

⊙ LIFTING CAPACITIES ON 360° ACCORDING WITH ISO 10567

*= HYDRAULIC

LIMIT LIFTING CAPACITIES ARE ON HOOK WITHOUT GRABS, MACHINE STATIC, LEVEL SOLID GROUND, WITH AXLE LOCKED.

WORKING DIAGRAM



AT8:
Gooseneck boom
4,80 m

Telescopic stick
2,6 - 3,5 m

OPERATING WEIGHT:

25.800 kg

OPERATING WEIGHT WITH FRONT BLADE,
REAR OUTRIGGERS, SOLID RUBBER TYRES,
GOOSENECK BOOM 4,80 m,
TELESCOPIC STICK,
RV 400 ORANGE PEEL GRAB WITH ROTATOR.

LIFTING CAPACITIES TONS "AT8"

LIFTING RANGE (m)

HEIGHT METERS	CONF.	4,0		5,5		7,0		8,5		8,9	
		○	⊙	○	⊙	○	⊙	○	⊙	○	⊙
7,5	○○			3,81*	3,81*						
	┌┐			3,81*	3,81*						
	└└			3,81*	3,81*						
6,0	○○			3,77*	3,77*	3,51*	3,49				
	┌┐			3,77*	3,77*	3,51*	3,51*				
	└└			3,77*	3,77*	3,51*	3,51*				
4,5	○○			4,11*	4,11*	3,62*	3,45	3,37*	2,59		
	┌┐			4,11*	4,11*	3,62*	3,62*	3,37*	3,37*		
	└└			4,11*	4,11*	3,62*	3,62*	3,37*	3,37*		
3,0	○○	6,37*	6,37*	4,72*	4,69	3,89*	3,37	3,41*	2,57		
	┌┐	6,37*	6,37*	4,72*	4,72*	3,89*	3,89*	3,41*	3,41*		
	└└	6,37*	6,37*	4,72*	4,72*	3,89*	3,89*	3,41*	3,41*		
1,5	○○	7,94*	6,89	5,38*	4,49	4,19*	3,27	3,48*	2,53	3,28*	2,38
	┌┐	7,94*	7,94*	5,38*	5,38*	4,19*	4,19*	3,48*	3,48*	3,28*	3,28*
	└└	7,94*	7,94*	5,38*	5,38*	4,19*	4,19*	3,48*	3,48*	3,28*	3,28*
0	○○	8,61*	6,64	5,78*	4,35	4,36*	3,20	3,36*	2,50		
	┌┐	8,61*	8,61*	5,78*	5,78*	4,36*	4,36*	3,36*	3,36*		
	└└	8,61*	8,61*	5,78*	5,78*	4,36*	4,36*	3,36*	3,36*		
-1,5	○○	8,16*	6,57	5,65*	4,29	4,14*	3,16				
	┌┐	8,16*	8,16*	5,65*	5,65*	4,14*	4,14*				
	└└	8,16*	8,16*	5,65*	5,65*	4,14*	4,14*				

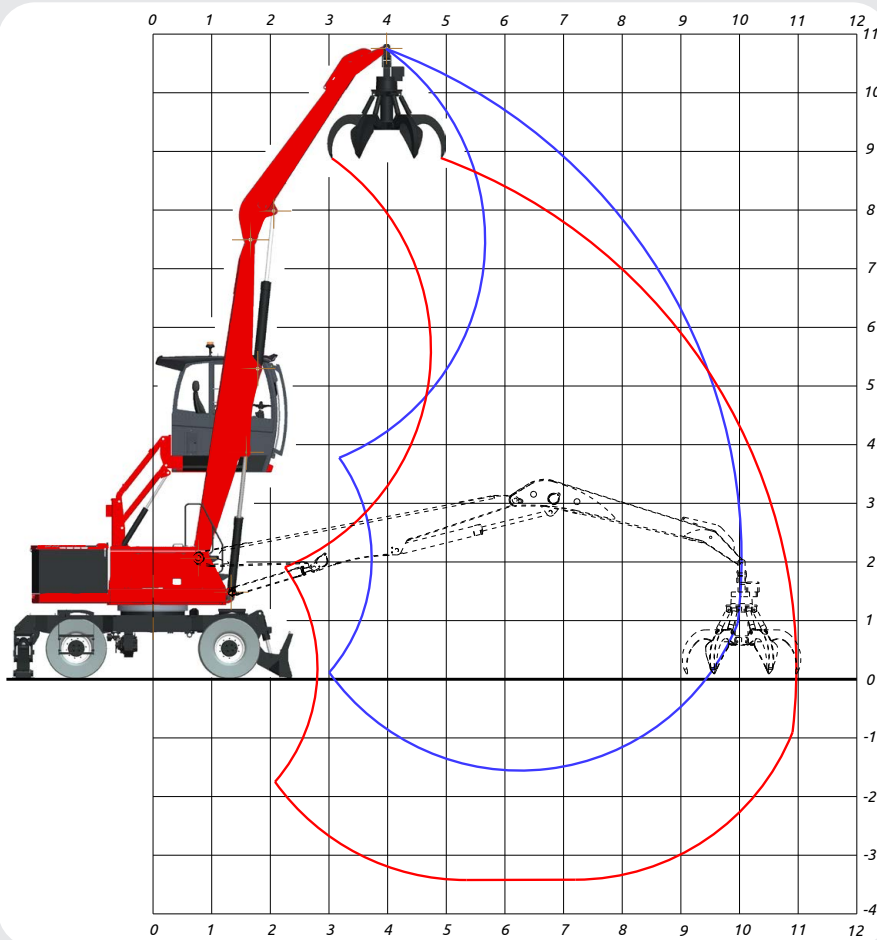
○ LIFTING CAPACITIES ON 360° WITHOUT SAFETY FACTOR

⊙ LIFTING CAPACITIES ON 360° ACCORDING WITH ISO 10567

*= HIDRAULIC

LIMIT LIFTING CAPACITIES ARE ON HOOK WITHOUT GRABS, MACHINE STATIC, LEVEL SOLID GROUND, WITH AXLE LOCKED.

WORKING DIAGRAM



DF10:
Straight boom
5,50 m

Industrial stick
4,00 m

OPERATING WEIGHT:

25.900 kg

OPERATING WEIGHT WITH FRONT BLADE,
REAR OUTRIGGERS, SOLID RUBBER TYRES,
STRAIGHT BOOM 5,50 m,
INDUSTRIAL STICK 4,00 m,
RV 400 ORANGE PEEL GRAB WITH ROTATOR.

LIFTING CAPACITIES TONS "DF10"

LIFTING RANGE (m)

HEIGHT METERS	CONF.	4,0		5,5		7,0		8,5		10,0	
		○	⊙	○	⊙	○	⊙	○	⊙	○	⊙
9,0	○○			4,08*	4,08*						
	┌┐			4,08*	4,08*						
	└└			4,08*	4,08*						
7,5	○○					3,88*	3,56				
	┌┐					3,88*	3,88*				
	└└					3,88*	3,88*				
6,0	○○			4,68*	4,68*	3,99*	3,54	3,41*	2,66		
	┌┐			4,68*	4,68*	3,99*	3,99*	3,41*	3,41*		
	└└			4,68*	4,68*	3,99*	3,99*	3,41*	3,41*		
4,5	○○			5,11*	4,87	4,11*	3,47	3,43*	2,64		
	┌┐			5,11*	5,11*	4,11*	4,11*	3,43*	3,43*		
	└└			5,11*	5,11*	4,11*	4,11*	3,43*	3,43*		
3,0	○○	7,95*	7,26	5,52*	4,66	4,26*	3,36	3,43*	2,59	2,29*	2,07
	┌┐	7,95*	7,95*	5,52*	5,52*	4,26*	4,26*	3,43*	3,43*	2,29*	2,29*
	└└	7,95*	7,95*	5,52*	5,52*	4,26*	4,26*	3,43*	3,43*	2,29*	2,29*
1,5	○○	3,35*	3,35*	5,74*	4,45	4,29*	3,26	3,34*	2,53	2,32*	2,05
	┌┐	3,35*	3,35*	5,74*	5,74*	4,29*	4,29*	3,34*	3,34*	2,32*	2,32*
	└└	3,35*	3,35*	5,74*	5,74*	4,29*	4,29*	3,34*	3,34*	2,32*	2,32*
0	○○	2,43*	2,43*	5,43*	4,32	4,03*	3,18	2,99*	2,50		
	┌┐	2,43*	2,43*	5,43*	5,43*	4,03*	4,03*	2,99*	2,99*		
	└└	2,43*	2,43*	5,43*	5,43*	4,03*	4,03*	2,99*	2,99*		
-1,0	○○			4,82*	4,28	3,59*	3,16	3,28	2,13		
	┌┐			4,82*	4,82*	3,59*	3,59*	4,16*	4,16*		
	└└			4,82*	4,82*	3,59*	3,59*	4,16*	4,16*		

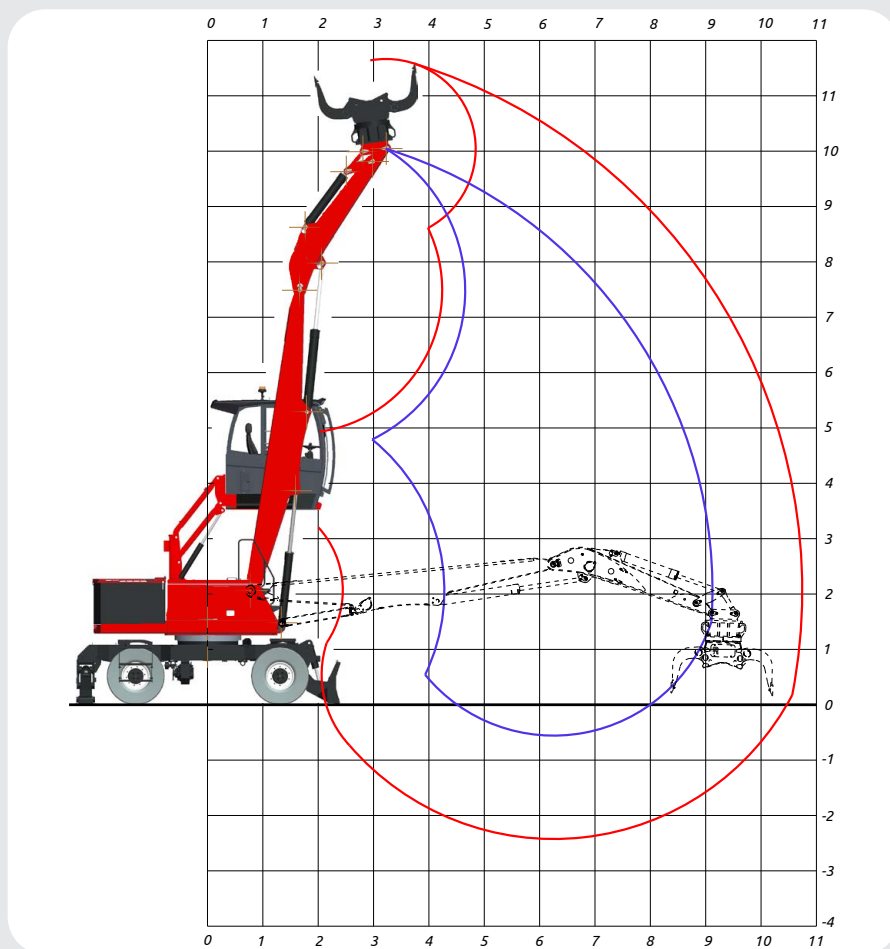
○ LIFTING CAPACITIES ON 360° WITHOUT SAFETY FACTOR

⊙ LIFTING CAPACITIES ON 360° ACCORDING WITH ISO 10567

*= HIDRAULIC

LIMIT LIFTING CAPACITIES ARE ON HOOK WITHOUT GRABS, MACHINE STATIC, LEVEL SOLID GROUND, WITH AXLE LOCKED.

WORKING DIAGRAM



DS9:
Straight boom
5,50 m

Selector arm
3,00 m

OPERATING WEIGHT:

26.100 kg

OPERATING WEIGHT WITH FRONT BLADE,
REAR OUTRIGGERS, SOLID RUBBER TYRES,
STRAIGHT BOOM 5,50 m,
SELECTOR ARM,
RS 501 X SELECTOR GRAB WITH ROTATOR.

LIFTING CAPACITIES TONS "DS9"

LIFTING RANGE (m)

HEIGHT METERS	CONF.	4,5		6,0		7,5		9,0		9,1	
		○	⊙	○	⊙	○	⊙	○	⊙	○	⊙
9,0	○○	5,35*	5,35*								
	┌┐	5,35*	5,35*								
	└└	5,35*	5,35*								
7,5	○○			4,47*	4,11						
	┌┐			4,47*	4,47*						
	└└			4,47*	4,47*						
6,0	○○	5,88*	5,88*	4,49*	4,07	3,63*	2,90				
	┌┐	5,88*	5,88*	4,49*	4,49*	3,63*	3,63*				
	└└	5,88*	5,88*	4,49*	4,49*	3,63*	3,63*				
4,5	○○	6,38*	6,02	4,66*	3,96	3,65*	2,85				
	┌┐	6,38*	6,38*	4,66*	4,66*	3,65*	3,65*				
	└└	6,38*	6,38*	4,66*	4,66*	3,65*	3,65*				
3,0	○○	6,92*	5,66	4,82*	3,80	3,63*	2,78	2,61*	2,14		
	┌┐	6,92*	6,92*	4,82*	4,82*	3,63*	3,63*	2,61*	2,61*		
	└└	6,92*	6,92*	4,82*	4,82*	3,63*	3,63*	2,61*	2,61*		
1,5	○○	2,79*	2,79*	4,70*	3,66	3,44*	2,71	2,23*	2,12	2,09*	2,09*
	┌┐	2,79*	2,79*	4,70*	4,70*	3,44*	3,44*	2,23*	2,23*	2,09*	2,09*
	└└	2,79*	2,79*	4,70*	4,70*	3,44*	3,44*	2,23*	2,23*	2,09*	2,09*
0	○○	2,88*	2,88*	4,01*	3,59	2,85*	2,68				
	┌┐	2,88*	2,88*	4,01*	4,01*	2,85*	2,85*				
	└└	2,88*	2,88*	4,01*	4,01*	2,85*	2,85*				

○ LIFTING CAPACITIES ON 360° WITHOUT SAFETY FACTOR

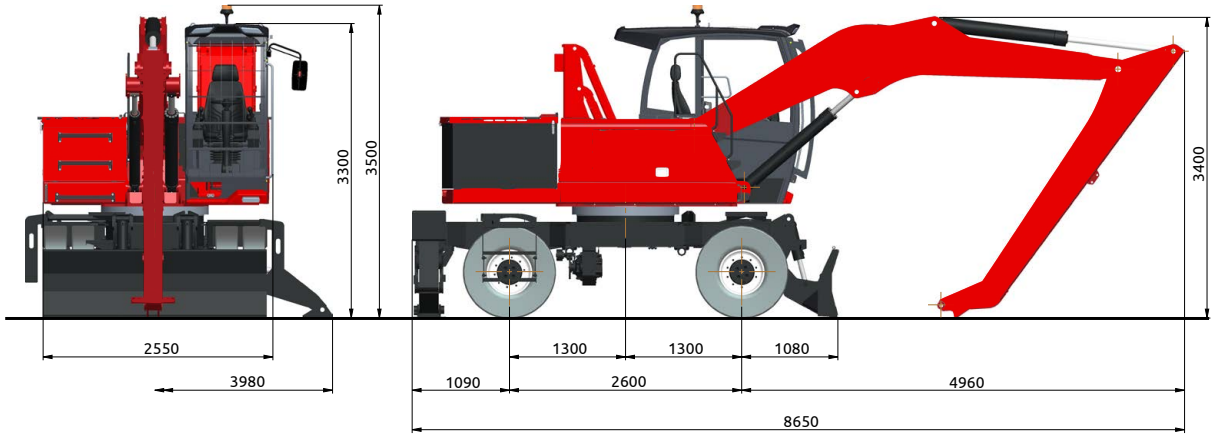
⊙ LIFTING CAPACITIES ON 360° ACCORDING WITH ISO 10567

* = HYDRAULIC

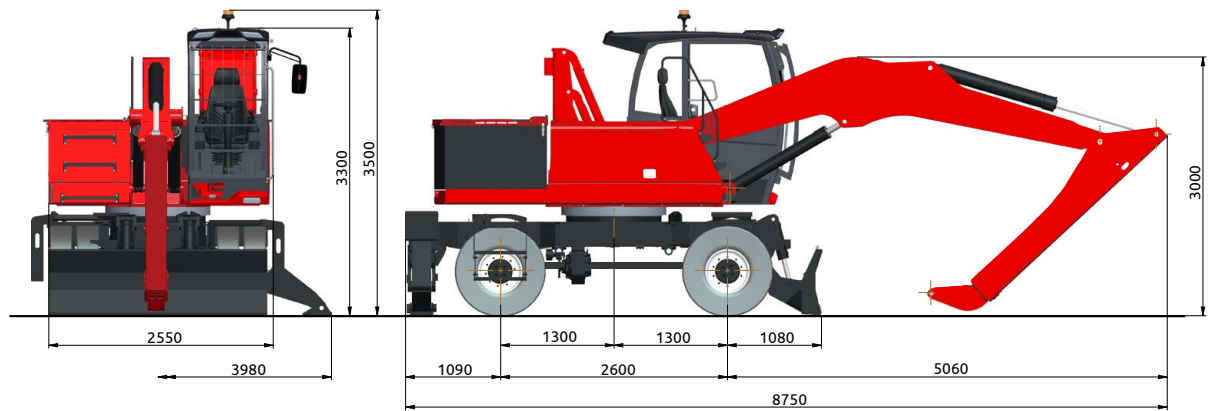
LIMIT LIFTING CAPACITIES ARE ON HOOK WITHOUT GRABS, MACHINE STATIC, LEVEL SOLID GROUND, WITH AXLE LOCKED.

DIMENSIONS

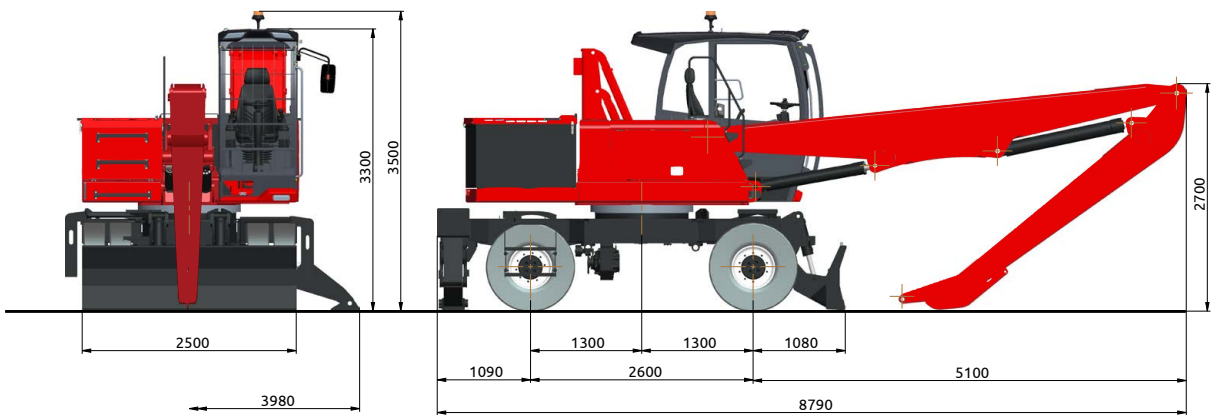
AF8



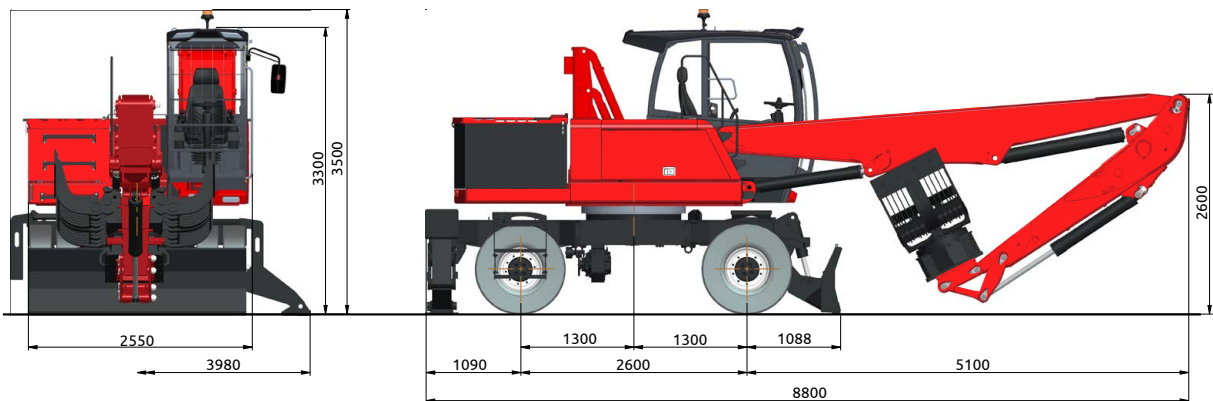
AT8



DF10



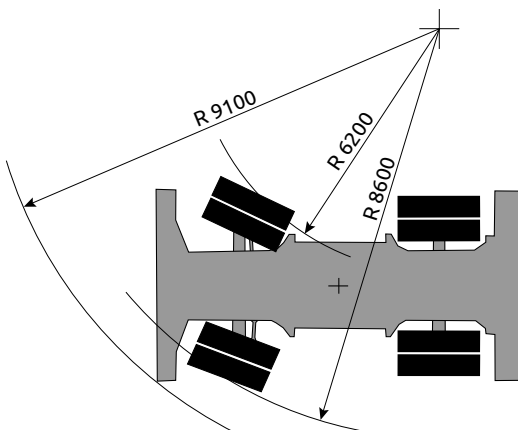
DS9



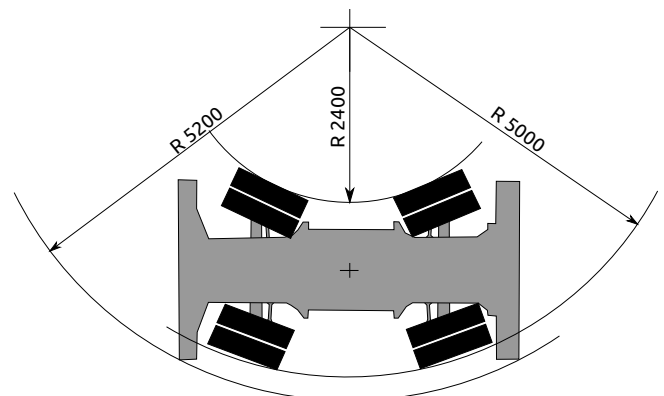
ACCESSORIES

ACCESSORIES	STANDARD	OPTIONAL
- N° 8 TWINNED SOLID RUBBER TYRES WITH SPACER RUBBER RINGS	•	
- DOUBLE STEERING AXLES		•
- STEERING ON JOYSTICK		•
- SELF LUBRICATING ANTI FRICTION BUSHES ON BLADE, OUTRIGGERS AND PARALLELOGRAM ELEVATING CAB.	•	
- MANUAL GREASING SYSTEM FOR THE STEERING AXLE	•	
- GEAR AND CARDAN JOINT PROTECTION		•
- WIDENINGS FOR FRONT DOZER BLADE		•
- TOWING HOOK		•
- HYDRAULIC PARALLELOGRAM RAISING CAB	•	
- HYDRAULIC PARALLELOGRAM RAISING CAB H6000		•
- OPERATOR SEAT WITH PNEUMATIC SUSPENSION AND HEATING DEVICE	•	
- SAFETY SEAT BELT	•	
- AUTOMATIC AIR-CONDITIONING SYSTEM	•	
- AIR-CONDITIONING FILTER WITH ACTIVATED CHARCOAL		•
- RADIO WITH BLUETOOTH®		•
- WEIGHTING SYSTEM		•
- ANTI-THEFT "MED" IMMOBILIZER DEVICE		•
- 3 WORKING LIGHTS ON THE CABIN	•	
- FRONT AND ROOF WINDOW SCREEN PROTECTION	•	
- TOTAL PROTECTION FOR THE CABIN		•
- AUTOMATIC GREASING SYSTEM FOR THE UPPERSTRUCTURE AND SLEW RING	•	
- GENERATOR SYSTEM + MAGNET 6kW - 120V		•
- ADDITIONAL HEATING SYSTEM FOR COLD WEATHER COUNTRIES		•
- CAMERA WITH 7" COLOURED DISPLAY INTO THE CABIN		•
- HYDRAULIC OIL REFILLING PUMP		•
- SOLIDA REMOTE MONITORING (SOLMEC LINK DATA)	•	
- LOCKING ARCH FOR LONG LOGS ON BOOM AND/OR STICK		•
- 2 LED WORKING LIGHTS ON STICK		•
- SAFETY VALVES ON ALL THE CYLINDERS	•	
- SELF LEARNING DIPPER PROXIMITY AND HEIGHT LIMITER.	•	
- OVERLOAD WARNING DEVICE	•	
- COUPLE OF BATTERY CHARGERS (ONE FOR EACH PACK)	•	

SINGLE STEERING AXLES



DOUBLE STEERING AXLES (OPTIONAL).



TECHNICAL DATA EXP 5020ZE

ELECTRIC MOTOR

Three phase electric motor with electronic control by inverter. 2 work speed are available, variable speed in function of the working mode choised.

4 working mode are suitable POWER, NORMAL, ECO, FINE.

Max power:	40 kW + 28 kW (swing system)
Rotating speed:	2300 giri/min
Max torque:	300 Nm

ELECTRICAL CIRCUIT

Powered by 2 parallel batteries from 930A to 120V. Voltage transformer from 120V to 24V for auxiliary circuits. Two inverters controlled by CAN-BUS for the management and control of the hydraulic pump and swing system. "High Frequency" electronic battery chargers and high efficiency charging.

HYDRAULIC SYSTEM

Open "LOAD SENSING" circuit constituted by a variable displacement axial pump, with automatic flow setting, 4 power levels setting from the display, feeding a distributor block composed by 6 elements, with high pressure control valves and anti-choc valves on each element. Possibility of adjusting the oil flow on each element.

Auxiliary services powered by the main pump.

Max. flow:	185 litri/min
Max. hydraulic pressure:	310 bar
Hydraulic tank capacity:	160 litri
Hydraulic circuit capacity:	240 litri

Additional pumps for brakes, direction and servo controls. Hydraulic oil cooling by aluminium heat exchanger. Thermostatic 24V fan. Micrometric filter for the hydraulic oil on the return line, integrated on the tank and on the control line.

TRAVEL

Hydrostatic with 4 wheel drive by means of a variable displacement hydraulic axial piston motor mounted on a two speed gearbox hydraulically operated from the cab coupled to the rear axle.

Travel controlled by two separate pedals (one for each travelling direction).

Travel speed (in both directions):

Working speed:	from 0 to 5,5 km/h
Travel speed:	from 0 to 17 km/h

Differential axles 2,50 m wide with planetary reduction gears on the hubs.

Braking valve integrated on the hydraulic motor.

BRAKES

SERVICE BRAKES: multiple discs oil bath on the hubs, hydraulically operated by the pedal.

PARKING AND EMERGENCY BRAKES: hydraulically released disk-type brake mounted on driveshaft.

STEERING

Hydraulic steering system powered by an independent pump. The front floating steering axle can be hydraulically locked from the cabin in any position.

SWING SYSTEM

Unlimited rotation in both directions thanks to a three-phase electric motor electronically controled by inverter. Braking of the rotation controlled by the inverter with recovery of energy to recharge of the main batteries. The electric motor is mounted on a dual stage oil bath planetary gearbox with negative oil bath brake discs and automatically released. High diameter double row ball bearing ring with internal teeth. Automatic greasing system

Max rotation speed:	9 giri/min
Tail swing radius:	2,35 mt

TYRES

N° 8 front and rear twinned solid rubber tyres SUPERELASTIC 10.00 x 20 with spacer rings

OPERATOR'S CAB

Hydraulically operated raising driver's cab mounted on a parallelogram linkage installed on silent block with large windows of tinted heat resistant safety glass; lateral opening window, upper and front glasses with safety grids and wipers. Winter heating and automatic air conditioned installed as standard with adjustable outlet. Radio preset.

Operator's seat with shock absorbing suspension, headrest, lumbar support, belt winder, electric seat heating device and armrests adjustable height and angle. Many possibilities of adjustment according to operator's weight and size.

INSTRUMENTATION

Consist of a colored display on the dashboard, includes: Motor speed indicator, state of the batteries charge level, hour counter, hydraulic oil temperature, Volt, two inverters diagnostics, and maintenance program, state of the machine stability, position and mass of the load. Warning lights showing: hydraulic oil filter clogging, park brake, brakes failure, lights, hydraulic oil low level, state of the machine stability.

CONTROLS

N° 2 electronic controlled joysticks to carry out the main four operations integrated with the armrests.

Electronic proportional rollers for front blade and/or outriggers and telescopic-selector arm and/or grab rotator.

Electro hydraulic devices for controlling hydraulic raising of the cab, parking brakes, front axle oscillation lock, gear box.

ARMS

With reach from 8 to 10 metres. Dipper stick could be also telescopic or selector arm.

ENERGY SAVING

KERS (Kinetic Energy Recovery System): Swing system with brake energy recovery. The energy is stored in the main batteries.

LESS (Load Energy Saving System): System to support the passive loads of the machine. It consists of a hydraulic cylinder directly connected to a hydropneumatic accumulator which guarantees a hydraulic force capable to support the weight of the arms.

Componenti idraulici, pompa e distributore principale ad alta efficienza.

SOUND LEVELS

NOISE LIMIT

Directive	2000/14/CE
Directive	2005/88/CE
Regulation	2024/1208/UE

Sound pressure level at the operator's position: LpA 76 dB (A)

ELECTROMAGNETIC COMPATIBILITY

(Dir. 2014/30/UE) - The machine complies with the specified limits for both emissions and immunity.

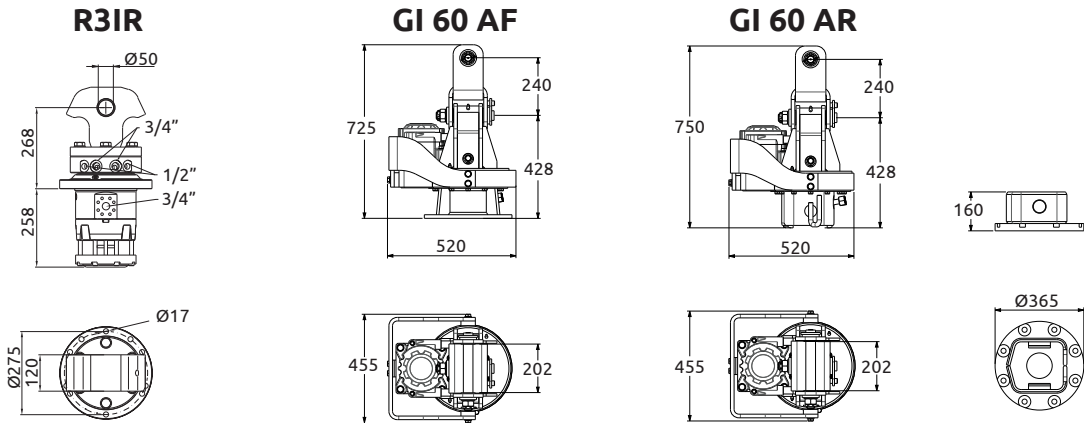
OVERLOAD WARNING DEVICE

Machinery Directive 2006/42/EC

Device for monitoring the machine's stability based on the load being handled and its position. It provides hazard warnings via acoustic and visual signals and automatically inhibits machine movements when stability limits are reached. It also displays the lifted load and the maximum permissible load in any working position.

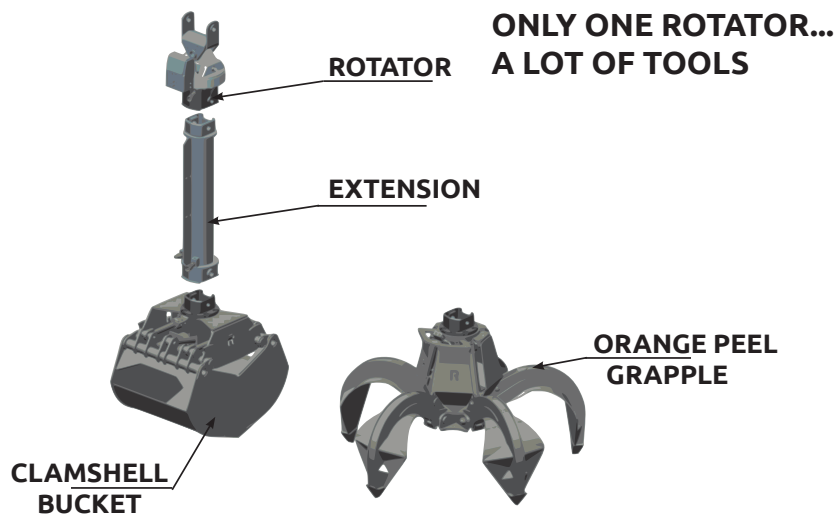
ATTACHMENTS

HYDRAULIC ROTATORS

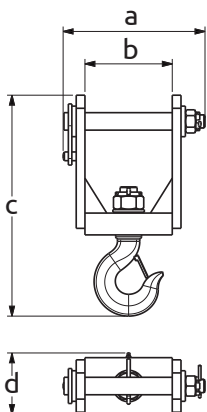


Model	Lifting capacity	Weight	Torque	Rotation max pressure	Rotation max flow	Attachment max pressure	Attachment max flow
R3IR	7 t	125 kg	210 daNm	190 bar	25 l/min	350 bar	-
GI 60 AF	5 t	200 kg	310 daNm	100 bar	32 l/min	300 bar	180 l/min
GI 60 AR	5 t	210 kg	310 daNm	100 bar	32 l/min	300 bar	180 l/min

SOLMEC QUICK COUPLER



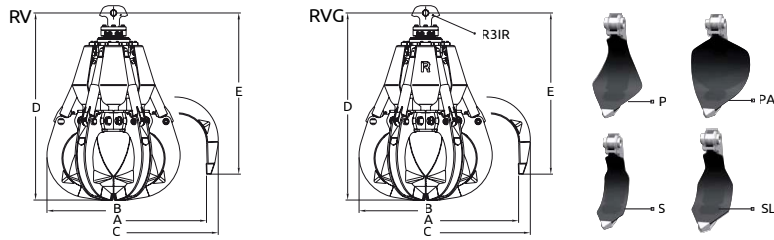
LIFTING HOOK



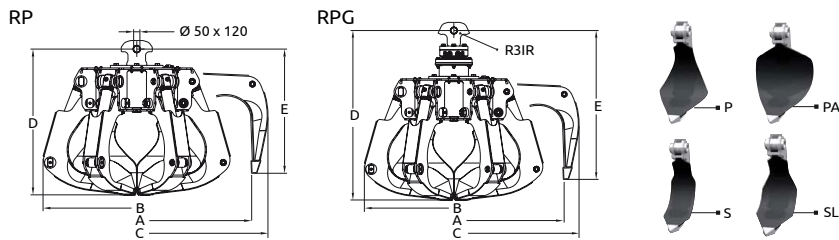
Model	Lifting capacity	Weight	Dimensions in mm			
			a	b	c	d
7.5 T	7.500 kg	340 kg	325	200	510	140

ATTACHMENTS

ORANGE PEEL GRABS FOR SCRAP

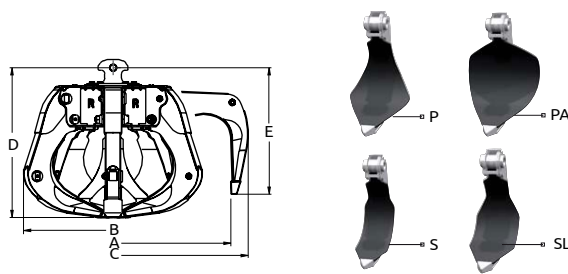


Model	Capacity	Tines	Weight	Nb of Tines	Dimensions in mm				
					A	B	C	D	E
RV400B	400 l	P - PA - S - SL	930 kg	5	1750	1240	1960	1750	1370
RV400B	400 l	P - PA - S - SL	1020 kg	6	1750	1240	1960	1750	1370
RVG400B	400 l	P - PA - S - SL	1000 kg	5	1750	1240	1960	1750	1510
RVG400B	400 l	P - PA - S - SL	1090 kg	6	1750	1240	1960	1750	1510



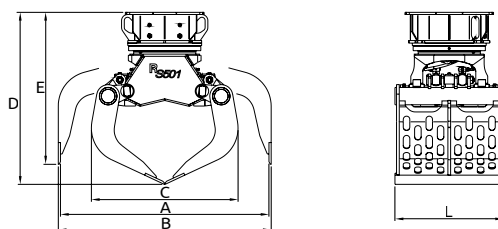
Model	Capacity	Tines	Weight	Nb of Tines	Dimensions in mm				
					A	B	C	D	E
RP500A	500 l	P - PA - S - SL	860 kg	5	1830	1490	2100	1165	995
RP500A	500 l	P - PA - S - SL	960 kg	6	1830	1490	2100	1165	995
RPG500A	500 l	P - PA - S - SL	960 kg	5	1780	1370	2015	1410	1195
RPG500A	500 l	P - PA - S - SL	1160 kg	6	1780	1370	2015	1410	1195

ORANGE PEEL GRABS FOR WASTE



Model	Capacity	Tines	Weight	Nb of Tines	Dimensions in mm				
					A	B	C	D	E
RR650A	650 l	P - PA - S - SL	920 kg	5	2000	1490	2215	1250	1020

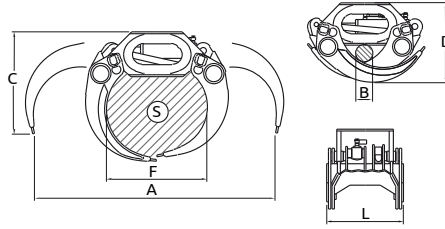
SELECTOR GRAB



Model	Capacity	Tine Force	Weight	Dimensions in mm					
				A	B	C	D	E	L
RS501X	500 l	4760 daN	970 kg	1800	1840	1250	1290	1250	850

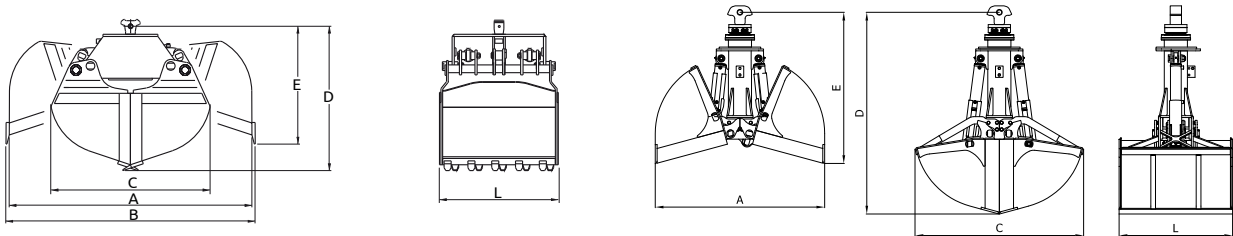
ATTACHMENTS

LOG GRAPPLES



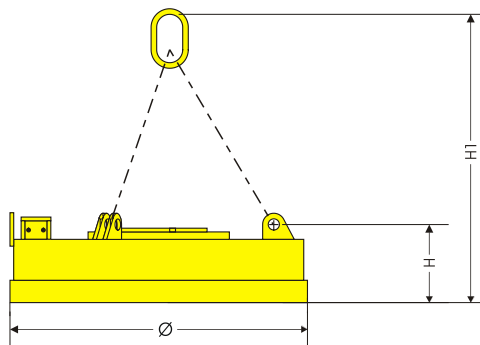
Model	Area	Lifting capacity	Weight	Dimensions in mm					
				A	B	C	D	L	F
SG 520 S-HD	0,52 m ²	8000 kg	475 kg	2279	170	886	753	514	-
R50/401	0,40 m ²	3000 kg	405 kg	1900	140	810	670	640	800
R50/604	0,60 m ²	4000 kg	800 kg	2160	230	890	890	920	900

CLAMSHELL BUCKETS



Model	Capacity	Tine Force	Weight	Dimensions in mm					
				A	B	C	D	E	L
R41/1000	750 l	4060 daN	880 kg	2140	2220	1400	1320	1100	1020
R41/1200	900 l	4060 daN	940 kg	2140	2220	1400	1320	1100	1250
R32A/1200	1000 l	5420 daN	1150 kg	1800	-	1780	2145	1600	1200

MAGNETS



Model	Absorbed power at 20° kW	Nominal Vdc	Weight kg	Ø mm	H mm	H1 mm	Hot tear strength (1) Δ= Ø300 kg	Hot lifting capacity (2)		Hot lifting capacity (3)			
								Slabs or blocks kg	Drop ball kg	Cast iron Pigs kg	Scrap		
											3A 2,2 ÷ 2,5 t/m ³ kg	24 1,9 ÷ 2,0 t/m ³ kg	40 0,8 ÷ 1,0 t/m ³ kg
EC100	5	120	600	1080	215	910	9500	4750	1700	190	170	140	80

(1) Determined in accordance with VDE 0580 § 36

(2) Determined after 5 hours and an ambient temperature of 20°C in accordance with VDE 0580 § 36

(3) Determined in accordance with VDE 0580 § 44 2-6



The latest version of the brochure is available on the Solmec website.



Viale delle industrie, 9
45100 ROVIGO - ITALY
phone +39 0425 474833
www.solmec.it
solmec@solmec.it